



# Bell & Gossett

Bulletin A-112

**Reliable, Maintenance-Free,  
Whisper-Quiet Wet Rotor  
Circulators for Residential  
and Light Commercial  
Heating Systems**



DESIGNED & MANUFACTURED  
IN THE U.S.A. FOR AMERICAN  
HEATING SYSTEMS

- High starting torque provides years of trouble-free start-ups
- Unique B&G DuraGlide™ Bearing System assures whisper-quiet, maintenance-free operation.
- Closed impeller design improves operating efficiency
- Backed by B&G's representatives and a great 3-year warranty
- NRF-22 replaces TACO 007 and Grundfos UP15-42F
- NRF-9F/LW - low watt model ideal for zoning applications

**Bell & Gossett**



**ITT Industries**  
*Engineered for life*

# Bell & Gossett Red Fox® Wet Rotor Circulators for Residential and Light Commercial Heating Systems



## Description

A residential or light commercial, maintenance free, axial flanged, in-line, cast iron, wet rotor, circulation pump for hydronic heating systems. UL, cUL and CSA listed.

## Operating Data

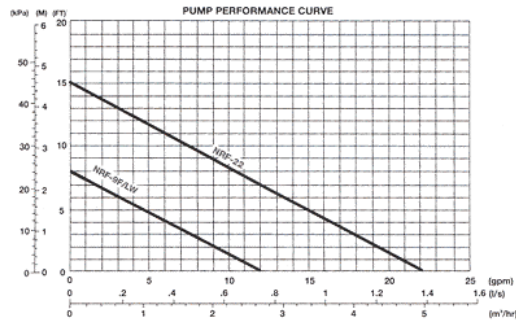
Maximum working pressure ..... 150 psi (10 bar)  
 Maximum operating temperature ..... 240°F (115°C)

## Materials of Construction

Pump Body ..... Cast Iron  
 Impeller ..... Polypropylene (30% Glass Filled)  
 Shaft ..... Ceramic  
 Bearings ..... Double-Sintered Carbon

## Warranty

Bell & Gossett offers a warranty of three years from date of manufacture or 18 months from date of installation (which ever comes first) against failure as a result of defects in materials and workmanship.



Model No.	Part No.	Flange Sizes Inches - NPT	Approx. Shpg. Wt. lbs. (Kg)	Standard 60 Cycle Motor Characteristics*				
				Watts	φ	Voltage	F.L. AMPS	RPM
NRF-22	103251	3/4, 1, 1-1/4, 1-1/2	9.3 (4.2)	92	1	115	.80	2940
NRF-9F/LW	103267	3/4, 1, 1-1/4, 1-1/2	9.3 (4.2)	41	1	115	.40	2800

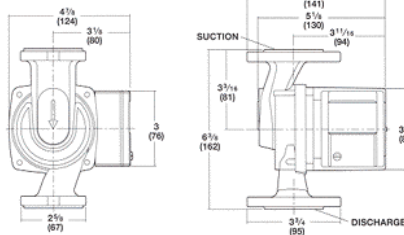
\*230/60/1 motors available upon request. Impedance protected.

1 DuraGlide™ Bearing System (blue areas in cutaway illustration) incorporates several components working together to eliminate seasonal freeze-up

2 Powerful Red Fox motor provides years of trouble-free operation

## Dimensions

NRF-9F/LW or NRF-22  
 Dimensions are approximate and subject to change. Contact factory for certified dimensions.



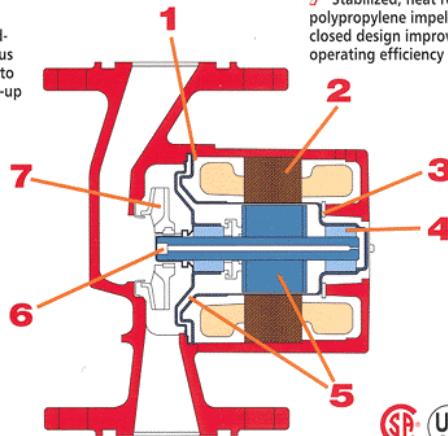
3 One-piece, high-nickel stainless steel stator can isolate the stator from system fluid and maintains precision bearing alignment for longer bearing life

4 Carbon bearings, diamond-like ceramic shaft and generous clearances are more resistant to lime, chloride and oxide build-up

5 Face plate and rotor sleeve feature corrosion resistant stainless steel construction for longer life

6 Self-cleaning particle shield protects the shaft and bearings from system start-up debris

7 Stabilized, heat resistant, polypropylene impeller, its closed design improves operating efficiency



**Bell & Gossett**

8200 N. Austin Avenue  
 Morton Grove, IL 60053  
 Phone: 847/966-3700  
 FAX: 847/966-9052  
 www.bellgossett.com