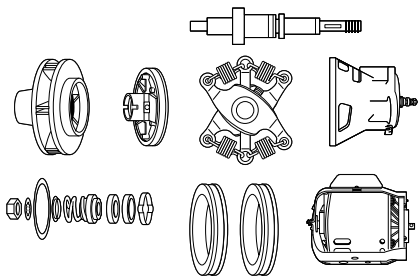


**Genuine B&G parts:
As good as the originals because
they are the originals**

Don't mess around with rebuilds or other cut-rate parts. They may look the same, but they're not.

When you install genuine B&G parts, you get fewer callbacks, less hassle, and a full 18-month factory warranty.

Call your local wholesaler today!



Engineered for life

www.bellgossett.com

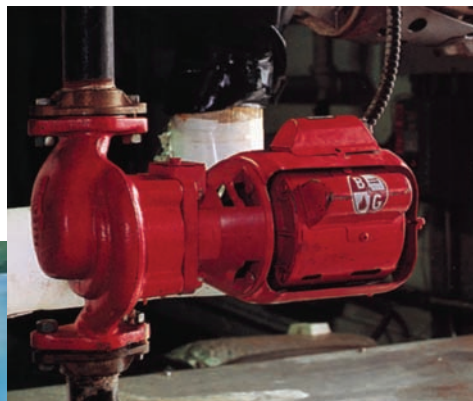


ITT

Bulletin FHD-120B

Bell & Gossett®

**What keeps this
30-year-old pump
running like new?**



www.bellgossett.com

Engineered for life

**It's been repaired
with genuine
Bell & Gossett
repair parts**



It's not uncommon for Bell & Gossett booster pumps like the Series 100 to be in service for 30 years or more. What makes them run and run and run? Quite simply, the exceptional quality of genuine B&G repair parts. Manufactured to the exact specifications as the pump itself, they simplify repairs and cost less in the long run.

Rugged B&G seal faces, for example, are made from specially-formulated carbon graphite material that forms a perfect seal. Unlike "cheaper" pirate parts, they withstand 225°F temperatures without warping or distortion. You get fewer call backs, plus you're protected by a full 18-month warranty.

Don't settle for anything less than the original. Insist on genuine B&G replacement parts.

**Nothing performs
like an original**

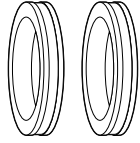


ITT

Here's why there's no part like the B&G original

Motor Mounts

An important contributor to the quiet operation for which B&G motors are known, B&G motor mounts absorb vibration and isolate noise. Made of neoprene for more effective oil resistance.



Coupler

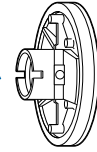
B&G's unique flexible spring design dampens vibration and noise. If quiet operation is important, insist on a genuine B&G coupling.

Oil Cap

Removable oil cap keeps dirt out and allows for easy inspection and replacement of the oil wicks. Oil cap legs push wicks into the bearing chamber to assure positive bearing contact.

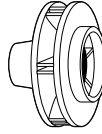
Sleeve Bearings

Long, bronze sleeve bearings maintain exact shaft alignment. Constant circulation of oil over bearing surfaces assures smooth, dependable operation.



Impeller

Features a true centrifugal configuration. Unique B&G design effectively prevents the accumulation of air at the seal face assuring long seal life and quiet, efficient operation.



Motor



Designed by B&G specifically for the B&G pump.

Two-piece motor bracket makes service a snap. Oil-lubricated motors have sleeve bearings and replaceable, resilient motor mounts. Modern, built-in thermal overload protector shuts off the motor if it overheats. All parts are UL recognized.

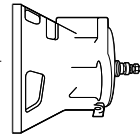
Seal



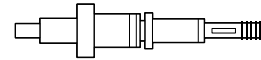
Designed specifically for B&G pumps. Protects bearings against water leakage. Built to withstand a wide range of water pressures (up to 125 psig.) and continuous operating temperatures from -30° to 225°F.

Bearing Assembly

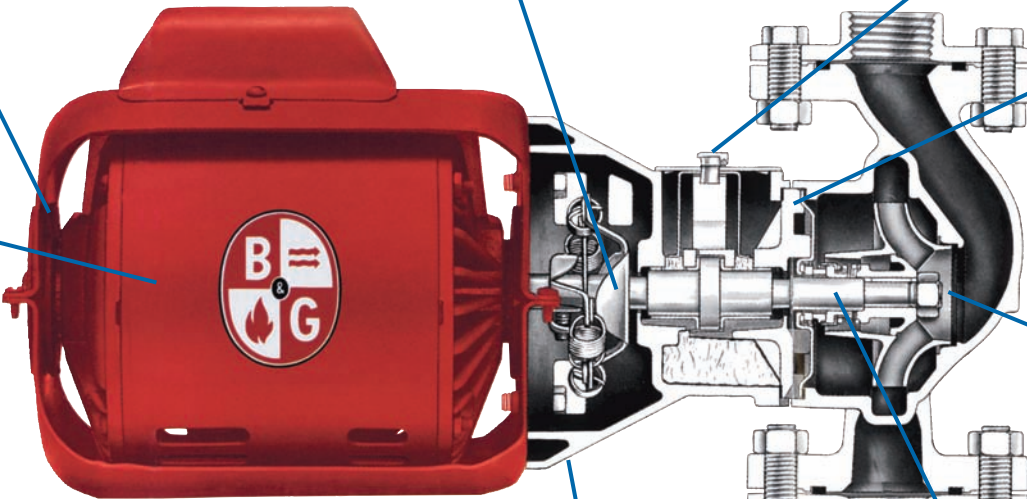
Designed to serve reliably for years. Built with a factory-specified, precision-ground and hardened pump shaft and fitted with bearings that maintain exact shaft alignment.



Shaft and Sleeve



B&G's replacement pump shaft is hardened and precision-ground to original factory specifications for a perfect fit. Hardened integral thrust collar prevents end-thrust to ensure long seal and bearing life. Sleeve is engineered to completely cover the wetted area under the seal. Stands up to the wear and tear of the pump's rotating assembly.



	Genuine B&G Replacement Parts	Non Genuine Replacement Parts
Conforms to OEM specs?	Yes	No
Maintains product UL listing?	Yes	No
Provides complete interchangeability with original product?	Yes	No
Provides technical field support?	Yes	No
Full line of parts available from one source?	Yes	No
Warranty?	18 mos.	Better Ask!



ITT

Engineered for life